



STEAMLOK ENGINEERING

PASSION FOR STEAM



UNIQUE SOLUTIONS
RELIABLE SERVICES
EASY TO MAINTAIN PRODUCTS



www.steamlok.com | www.steamlok.co.in

PRODUCTS OFFERED BY STEAMLOK



THERMODYNAMIC STEAM TRAP
MODEL : SLTT 76
 (15NB, 20NB, 25NB)



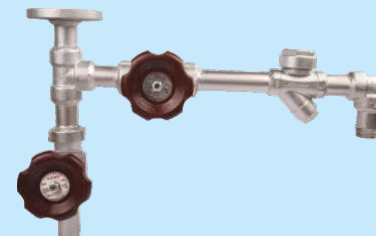
THERMODYNAMIC STEAM TRAP
MODEL : SLTT 85
 (15NB, 20NB)



THERMODYNAMIC STEAM TRAP
MODEL : SLTT 87 & SLTT 88
 (15NB, 20NB, 25NB)



THERMODYNAMIC COMPACT STEAM TRAP MODULE
MODEL : SLCMTT 35-C
 (15NB, 20NB, 25NB)



THERMODYNAMIC STEAM TRAP MODULE
MODEL : SLTT 95
 (15NB, 20NB, 25NB)



BALL FLOAT STEAM TRAP
MODEL : SLFT 75
 (15NB, 20NB, 25NB)



BALL FLOAT STEAM TRAP
MODEL : SLFT 75
 (40NB, 50NB)



BALL FLOAT STEAM TRAP
MODEL : SLFT 25
 (15NB, 20NB, 25NB)



BALL FLOAT STEAM TRAP
SLFT25
 (40NB, 50NB)



BALL FLOAT STEAM TRAP
SLFT 76
 (15NB, 20NB, 25NB)



BALL FLOAT STEAM TRAP
SLFT70
 (15NB, 20NB, 25NB)

PRODUCTS OFFERED BY STEAMLOK



BALL FLOAT STEAM TRAP MODULE
MODEL : SLFT 95



PHARMA TRAP
MODEL : SLSST 79
(15NB, 20NB, 25NB)



THERMOSTATIC AIR VENT
MODEL : SLAVT76-VH
(15NB, 20NB)



AIR VENT MODULE
MODEL : SLAVT76 - VH
(15NB, 20NB)



THERMOSTATIC STEAM TRAP
MODEL : SLTST76-V
(15NB, 20NB)



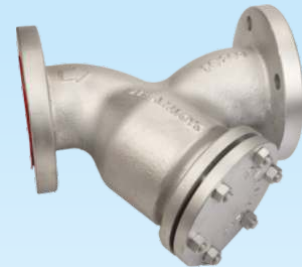
THERMOSTATIC STEAM TRAP
MODEL : SLTST35
(15NB, 20NB)



VACUUM BREAKER
MODEL : SLVB76
(15NB)



Y-STRAINER
MODEL: SLSTR15 & SLSTR25
(15NB ~ 50NB)



Y-STRAINER
MODEL : SLSTR15 & SLSTR25
(40NB ~ 200NB)



BASKET STRAINER
MODEL : SLBSTR 95
(25NB ~ 400NB)



DISC CHECK VALVE
MODEL : SLDCV 77
(15NB ~ 100NB)



MOISTURE SEPARATOR
MODEL : SLSEP 25
(25NB ~ 200NB)

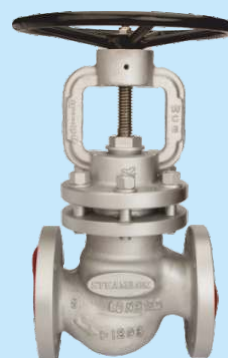
PRODUCTS OFFERED BY STEAMLOK



PISTON VALVE
MODEL : SLPV35
 (15NB ~ 40NB)



PISTON VALVE
MODEL : SLPV25
 (15NB ~ 25NB)



PISTON VALVE
MODEL : SLPV 25
 (40NB ~ 200NB)



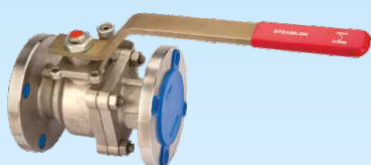
GLOBE VALVE
MODEL : SLGV 35
 (15NB ~ 40NB)



GLOBE VALVE
MODEL : SLGV 25
 (15NB ~ 200NB)



GATE VALVE
MODEL : SLGT 25
 (15NB ~ 200NB)



BALL VALVE
MODEL : SLBV78-2P TWO PIECE SS316



HIGH PRESSURE BALL VALVE
MODEL : SLBVHP



JACKETED BALL VALVE
MODEL : SLBV25 - J



CONTROL VALVE
MODEL - PRV/TCV



BUTTERFLY VALVE
MODEL : SLBV 75



CHECK VALVE
MODEL : SLCV 79



**AUTOMATIC BLOW DOWN CONTROL SYSTEM
ECO-BLOW**



**STEAM INJECTOR
MODEL : SLINJ 76
(15NB ~ 40NB)**



**STEAM SILENCER
MODEL : SLSS 76
(15NB ~ 25NB)**



**CONDENSATE RECOVERY PUMP
MODEL : SLCRP 75
(25NB ~ 80NB)**



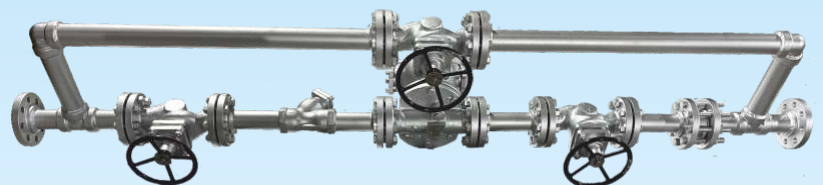
**CONDENSATE RECOVERY PUMPING TRAP
MODEL : SLCRPT 75
(40NB, 50NB)**



**FLASH VESSEL
MODEL : SLFV 96**



**DEAERATOR HEAD
MODEL : SLDA - 95**



**BALL FLOAT STEAM TRAP MODULE
MODEL : SLFT 95
(40NB ~ 50NB)**



**HOT WATER GENERATION SYSTEM
MODEL : SLHWGS**



**PRESSURE REDUCING STATION
MODEL : SLPRS 97**

THERMODYNAMIC STEAM TRAP - SLTT 76 (15NB, 20NB, 25NB)

- Medium Pressure & Temp.
- Uniquely Designed Replaceable Seat & Disc
- Easy Maintainable Trap
- Stainless Steel Construction
- Vacuum Heat Treated Seat & Disc
- Functional Test - 100% on Steam

| SIZE (NB) | MOC | PMA | TMA | END CONNECTION |
|------------|--------|--------------|-------|---|
| 15, 20, 25 | SS 304 | 48.9 bar (g) | 538°C | Screwed, Socket Weld ASA 150 / ASA 300 / ASA 600 |



THERMODYNAMIC STEAM TRAP - SLTT 85 (15NB, 20NB)

- Medium & High Press. Temp. Trap.
- Uniquely designed maintainable seat & disc.
- Oxidation free heat treatment (Vacuum) for seat & disc.
- Inbuilt strainer design for ease of maintenance.
- Functional test – 100% on steam.

| SIZE (NB) | MOC | PMA | TMA | END CONNECTION |
|-----------|-----|------------|-------|---|
| 15, 20 | WC6 | 65 bar (g) | 510°C | Screwed, Socket Weld ASA 150/ ASA 300/ ASA 600 |



THERMODYNAMIC STEAM TRAP - SLTT 87 & SLTT 88 (15NB, 20NB, 25NB)

- High Pressure & Temp.
- Uniquely Designed Replaceable Seat & Disc
- Easy Maintainable Trap
- Alloy Steel Construction
- Vacuum Heat Treated Seat & Disc
- Functional Test - 100% on Steam

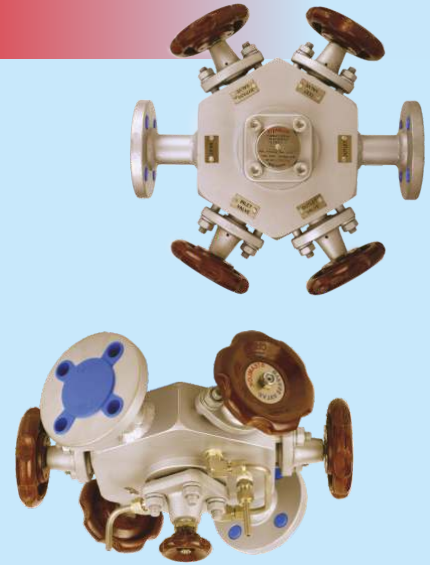
| SIZE (NB) | MOC | PMA | TMA | END CONNECTION |
|------------|-----|---------------|-------|--|
| 15, 20, 25 | F22 | 100 bar (g) | 540°C | Socket Weld, Butt Weld ASA 600 / ASA 1500 |
| | F91 | 124.9 bar (g) | 550°C | |



THERMODYNAMIC COMPACT STEAM TRAP MODULE - SLCMTT35 - C (15NB, 20NB, 25NB)

- Heat resistant handwheels.
- Uniquely designed maintainable seat.
- Oxidation free heat treatment (Vacuum) for seat & disc.
- Unique sealing arrangement for extended life of valve.
- Ease of operation & maintenance.
- Functional test – 100% on steam.

| SIZE (NB) | MOC | PMA | TMA | END CONNECTION |
|------------|------|--|-------------------------|----------------------------------|
| 15, 20, 25 | A105 | 76.6 bar (g) 10.5 bar (g) 29.3 bar (g) | 425°C 250°C 250°C | Socket Weld ASA 150 / ASA 300 |



BALL FLOAT STEAM TRAP - SLFT 75 (15NB, 20NB, 25NB)

- SG Iron Construction
- Maintainable Strainer Design
- On-Line Flushing Arrangement
- Sight Glass for on-line Monitoring
- Self Aligning SLR Design
- Unique Rotating Ball & Valve Seat Design Makes Trap “Zero Leak”
- Functional Test - 100% On Steam

| SIZE (NB) | MOC | PMA | TMA | END CONNECTION |
|------------|---------|------------------------|-------|--------------------|
| 15, 20, 25 | SG Iron | 16 bar (g) at 100°C | 200°C | BSP BSPT NPT |



BALL FLOAT STEAM TRAP - SLFT 75 (40NB, 50NB)

- Unique Rotating Ball Design Makes Trap “Zero Leak”
- Self Aligning Steamlok Release (SLR)
- Sight Glass as Standard Feature
- Functional Test - 100% On Steam

| SIZE (NB) | MOC | PMA | TMA | END CONNECTION |
|-----------|---------|------------------------|-------|--------------------|
| 40, 50 | SG Iron | 16 bar (g) at 100°C | 200°C | BSP BSPT NPT |



BALL FLOAT STEAM TRAP - SLFT 25 (15NB, 20NB, 25NB)

- Uniquely designed Eco Ball Float steam trap.
- MOC cast steel (WCB).
- Self-aligning steam lock release (SLR).
- Functional test – 100% on steam.

| SIZE (NB) | MOC | PMA | TMA | END CONNECTION |
|------------|-----|------------|-------|---|
| 15, 20, 25 | WCB | 51 bar (g) | 425°C | Screwed, Socket Weld ASA 150 / ASA 300 |



BALL FLOAT STEAM TRAP - SLFT 25 (40NB, 50NB)

- Dual Sight Glass as Standard Feature for easy Monitoring
- High Discharge Capacity
- Functional Test - 100% on Steam

| SIZE (NB) | MOC | PMA | TMA | END CONNECTION |
|-----------|---------------------|------------|-------|------------------------------|
| 40, 50 | WCB (Cast Steel) | 51 bar (g) | 425°C | SCR/SW ASA 150 ASA 300 |



BALL FLOAT STEAM TRAP - SLFT 76 (15NB, 20NB, 25NB)

- Inbuilt strainer design for ease of maintenance.
- Sight glass as a standard feature.
- MOC stainless steel (CF8).
- Functional test – 100% on steam.

| SIZE (NB) | MOC | PMA | TMA | END CONNECTION |
|------------|--------|------------|-------|--|
| 15, 20, 25 | SS 304 | 41 bar (g) | 538°C | Screwed, Socket Weld ASA 150/ ASA 300 |



BALL FLOAT STEAM TRAP - ECO - SLFT 70 (15NB, 20NB, 25NB)

- Unique Rotating Ball Design
Makes Trap “Zero Leak”
- Self Aligning Steamlok Release (SLR)
- Functional Test - 100% on Steam



| SIZE (NB) | MOC | PMA | TMA | END CONNECTION |
|------------|-----------|------------|-------|--------------------|
| 15, 20, 25 | Cast Iron | 13 bar (g) | 200°C | BSP BSPT NPT |

PHARMA TRAP - SLSST 79 (15NB, 20NB, 25NB)

- Self Drainable Body & Cap Design
- Gasket Certification :
*FDA CFR 177.1550
*U. S. Pharmacopeia Class VI Certification
- Internal Surface Finish of Body & Cap ≤ 0.4 $\mu\text{m Ra}$ (Electropolished)
- MOC for all Wetted Parts SS316L



| SIZE (NB) | MOC | PMA | TMA | END CONNECTION |
|------------|---------|------------|-------|--------------------------|
| 15, 20, 25 | SS 316L | 10 bar (g) | 176°C | ASME BPE - TRI CLAMP END |

THERMOSTATIC AIR VENT - SLAVT 76-VH (15NB, 20NB)

- Corrosion resistant stainless-steel construction with Inbuilt strainer screen.
- Thermostatic element designed for wide pressure range.
- Functional test – 100% on steam.



| SIZE (NB) | MOC | PMA | TMA | END CONNECTION |
|-----------|--------|------------|-------|-----------------------------|
| 15, 20 | SS 304 | 49 bar (g) | 538°C | Screwed : BSP, BSPT, NPT |

THERMOSTATIC STEAM TRAP - SLTST76 - V (15NB, 20NB)

- Corrosion resistant stainless-steel construction with Inbuilt strainer screen.
- Thermostatic element designed for wide pressure range.
- Functional test – 100% on steam.

| SIZE (NB) | MOC | PMA | TMA | END CONNECTION |
|-----------|--------|------------|--------------------|--------------------------|
| 15, 20 | SS 304 | 49 bar (g) | 538 ^o C | Screwed : BSP, BSPT, NPT |



VACUUM BREAKER- SLVB76 (15NB)

- Corrosion resistant stainless-steel construction.
- Robust spring loaded design.
- Functional test – 100% on steam.

| SIZE (NB) | MOC | PMA | TMA | END CONNECTION |
|-----------|--------|--------------|--------------------|--------------------------|
| 15 | SS 304 | 49.6 bar (g) | 538 ^o C | Screwed : BSP, BSPT, NPT |



Y- TYPE STRAINER - SLSTR 25 - SW - SCR (15NB - 50NB)

- Uniquely designed Y- Type strainer
- MOC Cast Steel (WCB)
- Drain plug as an optional feature for ease of maintenance

| SIZE (NB) | MOC | PMA | TMA | END CONNECTION |
|----------------------|-----|--------------|--------------------|----------------------|
| 15, 20, 25 40, 50 | WCB | 29.6 bar (g) | 425 ^o C | Screwed, Socket Weld |



Y- TYPE STRAINER - SLSTR 25 (40NB ~ 200NB)

- Bolted Strainer Cap above 40 NB Size for ease for Maintenance
- Drain Plug as an Optional Feature for easy Upkeep of Strainer



| SIZE (NB) | MOC | PMA | TMA | END CONNECTION |
|--|------------------------|--------------|-------------|----------------|
| 40, 50, 65, 80, 100, 125, 150, 200 | WCB (Cast Steel) | 19.6 bar (g) | -29 to 38°C | ASA 150 |
| | | 5.5 bar (g) | 425°C | |
| | | 51.1 bar (g) | -29 to 38°C | ASA 300 |
| | | 28.8 bar (g) | 425°C | |

DISC CHECK VALVE - SLDCV 77 (15NB ~ 100NB)

- Compact Design
- Light Weight
- Disc Check Valve must be Fitted Between Flanges as per Flow Direction Indicated on Body



| SIZE (NB) | MOC | PMA | TMA | END CONNECTION |
|--------------------------------|-------|-------------------------|------------------------|---|
| 15, 20, 25, 40, 50, 80, 100 | SS316 | 49.6 bar (g) at 38°C | 425°C at 29.1bar(g) | Between two flanges ASA 150 or ASA 300 |

MOISTURE SEPARATOR - SLSEP 25 (25NB ~ 200NB)

- Baffle Type Construction for Enhanced Condensate Removal Efficiency
- Suitable for Both Steam & Compressed Air



| SIZE (NB) | MOC | PMA | TMA | END CONNECTION |
|---|------------------------|--------------|-------------|----------------|
| 25, 40, 50, 65, 80, 100, 125, 150, 200 | WCB (Cast Steel) | 19.6 bar (g) | -29 to 38°C | ASA 150 |
| | | 5.5 bar (g) | 425°C | |
| | | 51.1 bar (g) | -29 to 38°C | ASA 300 |
| | | 28.8 bar (g) | 425°C | |

PISTON VALVE - SLPV 35 (15NB ~ 40NB)

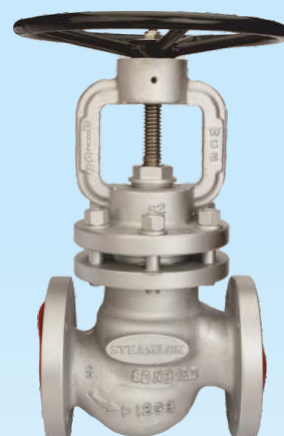
- Unique Sealing Arrangement for Extended Life of Valve
- Heat Resistance Hand Wheel, ease of Operation
- Wear & Erosion Resistance for Most of the Fluids
- Class VI Leakage Valve
- Use of Belleville Washer to Compensate Thermal Expansion



| SIZE (NB) | MOC | PMA | TMA | END CONNECTION |
|-----------------------|---------------------------------------|--|---|--|
| 15, 20, 25, 32, 40 | A105 (Forged Carbon Steel) | 20 bar (g) 31.6bar (g) 76.4bar (g) 13.8bar (g) 34.7bar (g) | 425°C 425°C 425°C 200°C 400°C | BSP BSPT / NPT SOCKET WELD ASA 150 ASA 300 |

PISTON VALVE - SLPV 25 (15NB ~ 200NB)

- Unique Sealing Arrangement for Extended Life of Valve
- Wear & Erosion Resistance for Most of the Fluids
- Class VI Leakage Valve
- Use of Belleville Washer to Compensate Thermal Expansion



| SIZE (NB) | MOC | PMA | TMA | END CONNECTION |
|---|------------------------|---|--|--------------------|
| 15, 20, 25, 40, 50, 65, 80,100, 125, 150, 200 | WCB (Cast Steel) | 19.6 bar (g) 5.5 bar (g) 51.1 bar (g) 28.8 bar (g) | -29 to 38°C 425°C -29 to 38°C 425°C | ASA 150 ASA 300 |

CONTROL VALVE (PRV / TCV)

- Rangeability 1.40
- Non Threaded Seat - Maintenance Friendly
Avoiding Wear & Tear
- Reversible Type Seat : Can be used Both
Sides Ensuring Higher Life
- Stuffing Box SS : Ensures Zero Leakage
- Floating Ring Ensures Perfect Alignment of Plug & Seat



CONDENSATE RECOVERY PUMP - SLCRP 75 (25NB ~ 80NB)

- Body MOC - Carbon Steel
- Internals in SS Ensure no Corrosion & Longer Life
- View Glass for Monitoring
- Unique Spring Design for Longer Life
- Internals above Condensate Level therefore not Prone to Changes in Temperature Cycles.
- Overall Very Compact Design



PUMPING TRAP - SLCRPT 75 (40NB ~ 50NB)

- Carbon Steel Construction
- Inbuilt View Glass for Online Monitoring
- Two Different Assembly for Pump & Float Trap Mechanism
- Easy Maintenance of both Pump & Float Trap Individually
- Discharge Capacity is 2800 kg/hr.



DEAERATOR HEAD - SLDA 95

- SS 304 Construction to Avoid Corrosion & Hence Longer Life of Product
- Unique Design for Condensate, Makeup Water & Flash Steam Inlet with Syphon Ensuring Proper Mixing Resulting in Better Efficiency & Uniform Temperature Profile
- Discharge Unit is Also of SS304 Ensuring no Corrosion & Longer Life of Sparing Area



FLASH VESSEL - SLFV 96

- Carbon Steel Construction
- Maximum Flash Steam Recovery
- Zero Maintenance Product
- Customized to Customer Requirements
- Available in IBR as Special



HOT WATER GENERATION SYSTEM - SLHWGS

- Pre-assembled, skid-mounted system that comes complete with all essential instrumentation for immediate use.
- Integrated overheat protection ensures safe operation and extends the system's lifespan.
- Space-efficient design with a compact footprint, making it ideal for installations with limited floor space.



PRESSURE REDUCING STATION - SLPRS 97

- Carbon Steel Construction
- Complete Solution for Pressure Reduction, De-Superheating & Temperature Control
- Pneumatic actuated Control Valve
- Piston Valve as isolation Valves
- IBR approvals



PRODUCTS INSTALLATION

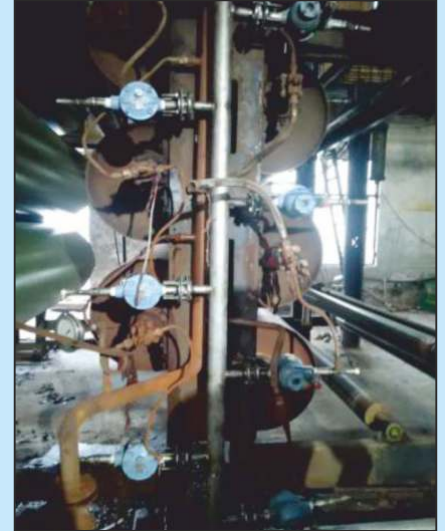
**INSTALLATION OF
CONTROL VALVE & TRAPS
ON PACKAGING MACHINE**



**FLOAT TRAP INSTALLATION
DRYING MACHINE IN
PLYWOOD INDUSTRY**



**INSTALLATION OF
BALL FLOAT TRAPS ON
VERTICAL DRYING RANGE MACHINE
(VDR) IN TEXTILE INDUSTRY**



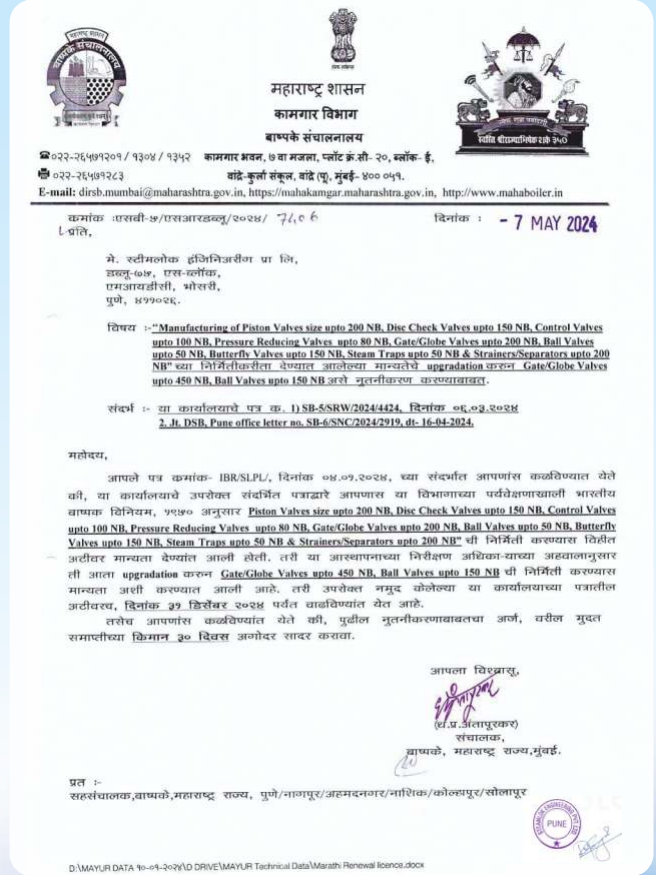
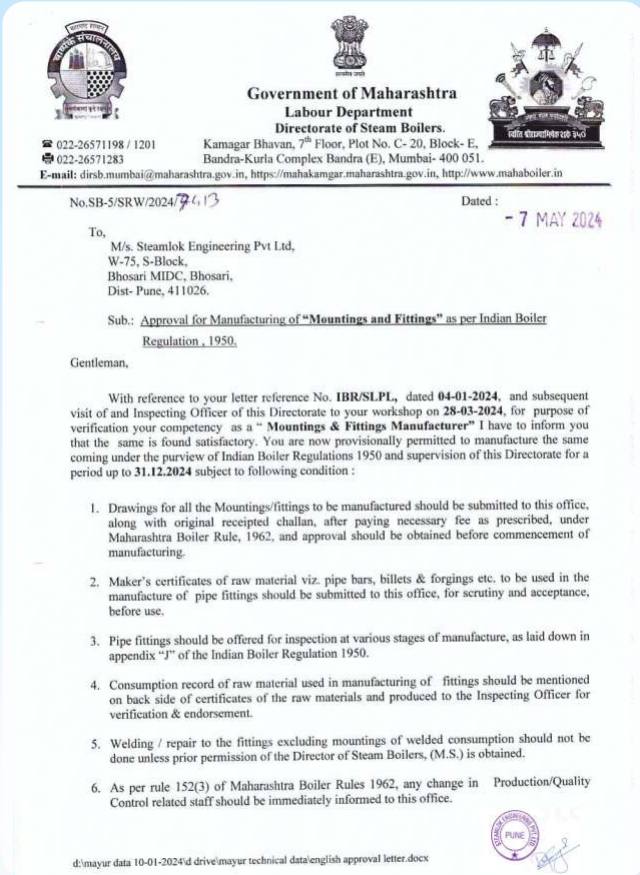
INSTALLATION OF CONDENSATE RECOVERY SYSTEM



OUR SERVICES



- Steam / Energy Audits
- Steam Circuit Design
- Turnkey Projects
- Boiler Erection
- Condition Monitoring of equipment
- IBR / NIBR Piping
- Jet Cleaning
(Pressure Part / Condenser)
- NDT Services
(Thickness Mapping, Radiography,
SR Testing)





CONTINENTAL MILKOSE (INDIA) LTD.

CIN: U74999AA1902PLC017407
Corporate Office
A-75, New Friends Colony,
New Delhi - 110 025



Phones: 011-25842564, 25926085
011-25927585, 26313286
011-40536601, 25844368
Fax: 011-25927585
E-mail: info@milkoase.com
gotshrik.de@gmail.com
Website: www.milkoase.com

Date: 05th February, 2019

TO WHOM SO IT MAY CONCERN

"This is to certify that we have installed Steamlok's Ball float traps in our plants and the same have been operational for the last 16 weeks and the performance has been extremely satisfactory till date.

The special and unique features of the product like-Inbuilt sight glass and inbuilt Steiner have been very instrumental in periodic monitoring as well as periodic maintenance of the trap."

These Innovative features have been really helping us to maintain our Process Performance and reduce downtime of our plant.

For Continental Milkose (India) Ltd.

[Signature]
Authorized Signatory

Regd. Office: Flat No. 5D, Pshyanka Apartment, SC Goswami Road, Panbazar, Guwahati-Kamrup-Assam-781001, INDIA
Head Office: Manwan Farm, Dibrugarh-786001, Assam
Branch Office: K-185/2, Surya Plaza Building, 1st Floor, Sarai Julena, New Friends Colony, New Delhi - 110025
Works: Noida-Dadri Main Road, Vill. Habibpur, P.O. Kulesra, Greater Noida-201 306, Distt. Gautam Budh Nagar (U.P.)



Date : 07-01-2020

Subject : Performance of Steamlok make Products.

We are using Steamlok make products namely Stainless Steel Thermodynamic Steam Traps form last 24 months.

The performance of the product is found satisfactory. The service given by Steamlok is also found satisfactory.



Govind Milk & Milk Products Pvt. Ltd.

Ganeshsheri, Pandharpur Road, Kolki, Tal. Phaltan, Dist. Satara, Pin - 415 523
Ph - 02166 - 221302, Fax : 02166 - 226025, E-mail : contact@govindmilk.com web : www.govindmilk.com
CIN-U15201MH1996PTC101588

ME ENERGY PVT. LTD.

Office & Works : Gat No. 1083/ 1/B, Markal, Tal. Khed, Dist. Pune 412 105,
Maharashtra, INDIA. CIN : U51503PN1998PTC114226
Tel. : +91 2135 626 262 Fax : +91 2135 626 298
Email : mepl@meenergy.com Web : www.meenergy.com



Date: 14-01-2020

Subject: Performance of Steamlok make Thermodynamic Steam Traps and Ball Float Steam Traps.

We are using Steamlok make products namely Thermodynamic Steam Traps and Ball Float Steam Traps (SLTT 76, SLTT75 and SLTT25) are performing well.

As per the subject Steamlok supplied thermodynamic steam traps and ball float steam traps for our projects. Supplied steam traps are performing satisfactorily as per the design.

The service given by Steamlok is also found satisfactory.

Thanking You,

[Signature]

Rakhee Kerkar

Sr. Executive-Procurement



ME ENERGY PVT. LTD.

Office & Works: Gat No.1083/1B, Markal,

Taluka - Khed, Pune - 412 105.

☎ : +91 9652586042

☎ : +91 2135 626217

Email ID: rakhee@meenergy.com

Web: www.meenergy.com

Energy Systems... Perfectly Customized...

Energy Systems... Perfectly Customized...



Aarti Drugs Limited

Manufacturers of : Bulk Drugs & Chemicals

Factory: Plot No. G-91/62, M.I.D.C., Tarapur,
Koliwade Village, Tal. & Dist. Palghar
State Maharashtra, Pin - 401 505.
Mob. : 9970052099 / 7709735293
Email : adg50@aartidrugs.com
Web : www.aartidrugs.com

Date: 07/10/2024

To Whom So Ever It May Concern

I am writing to express our satisfaction with the Steamlok make products namely Float Traps (SLFT75), Thermodynamic Trap (SLTT76), Piston Valves (SLPV25) that we have been using in our plant. Over the past year, we have consistently observed superior performance and reliability from their products, which have met and even exceeded our operational expectations.

The key benefits we've noted include:

- **Efficiency:** The products have significantly contributed to improving our production efficiency.
- **Durability:** Steamlok products have proven to be durable even in our demanding operational environment, reducing the need for frequent maintenance.
- **Reliability:** We have experienced minimal downtime thanks to the consistency and reliability of the equipment.

Overall, we are highly satisfied with the performance and would confidently recommend Steamlok products to others seeking dependable solutions for their industrial needs.



[Signature]
Salim Shaikh

CORPORATE OFFICE : Mahendra Industrial Estate, Ground Floor, Plot No.109-D, Road No. 29, Sion (E),
Mumbai - 400 022. Tel. : 022-2407 2249 / 2401 9025 (30 Lines) Fax : 022-2407 3452 / 2407 0144
Email : admin@aartidrugs.com • Website : www.aartidrugs.com
REGD. OFFICE : Plot No. N-198 M.I.D.C., Tarapur, Tal & Dist. Palghar, Pin - 401 506 (Mh)



OUR ESTEEMED CUSTOMERS





Steamlok Engineering Private Limited

Head Office : Plot No. 44, Tiny Industrial Estate, Pisoli Road, Kondhwa Budruk,
Pune (MH) 411 048, India

Factory : W75, S-Block, MIDC Bhosari, Pune (MH) 411 026, India

Contact : +91 9881566175 / 9822848863

Email : sales@steamlokengineering.com

Web : www.steamlok.com | www.steamlok.co.in