

STEAMLOK ENGINEERING

[SLCMTT35-C]

COMPACT MODULE



The SLCMTT35-C is Compact Thermodynamic Steam Trap Module specifically designed for main steam line applications, it consists of Inlet isolation, Outlet isolation, Bypass, Trap Vent and Trap Test valves. Its replaceable internals and integrated strainer simplify inline maintenance. It is used for removal of condensate in closed loop & connected to recovery system.

SIZE

15NB, 20NB & 25NB

PIPE CONNECTIONS

Socket Weld, ASA 150 & ASA 300 weld on Flanged.

UNIQUE FEATURES

- Heat resistant handwheels.
- Uniquely designed maintainable seat.
- Oxidation free heat treatment (vacuum) for seat & disc.
- Unique sealing arrangement for extended life of valve.
- Ease of operations & maintenance.
- Functional test 100% on steam.

DESIGN CONDITIONS

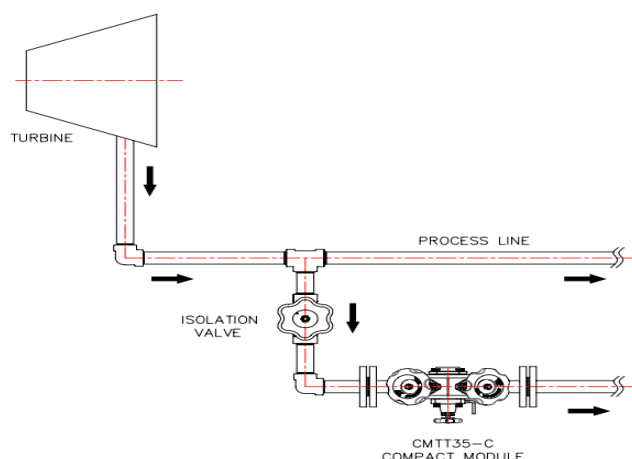
END Connection	Max. Allow. Press. (PMA) bar (g)	Max. Allow. Temp. (TMA) deg. C
Socket Weld	76.6	425
ASA 150#	10.5	250
ASA 300#	29.3	250

CERTIFICATION

IBR Approval / EN 10204 3.4

INSTALLATION

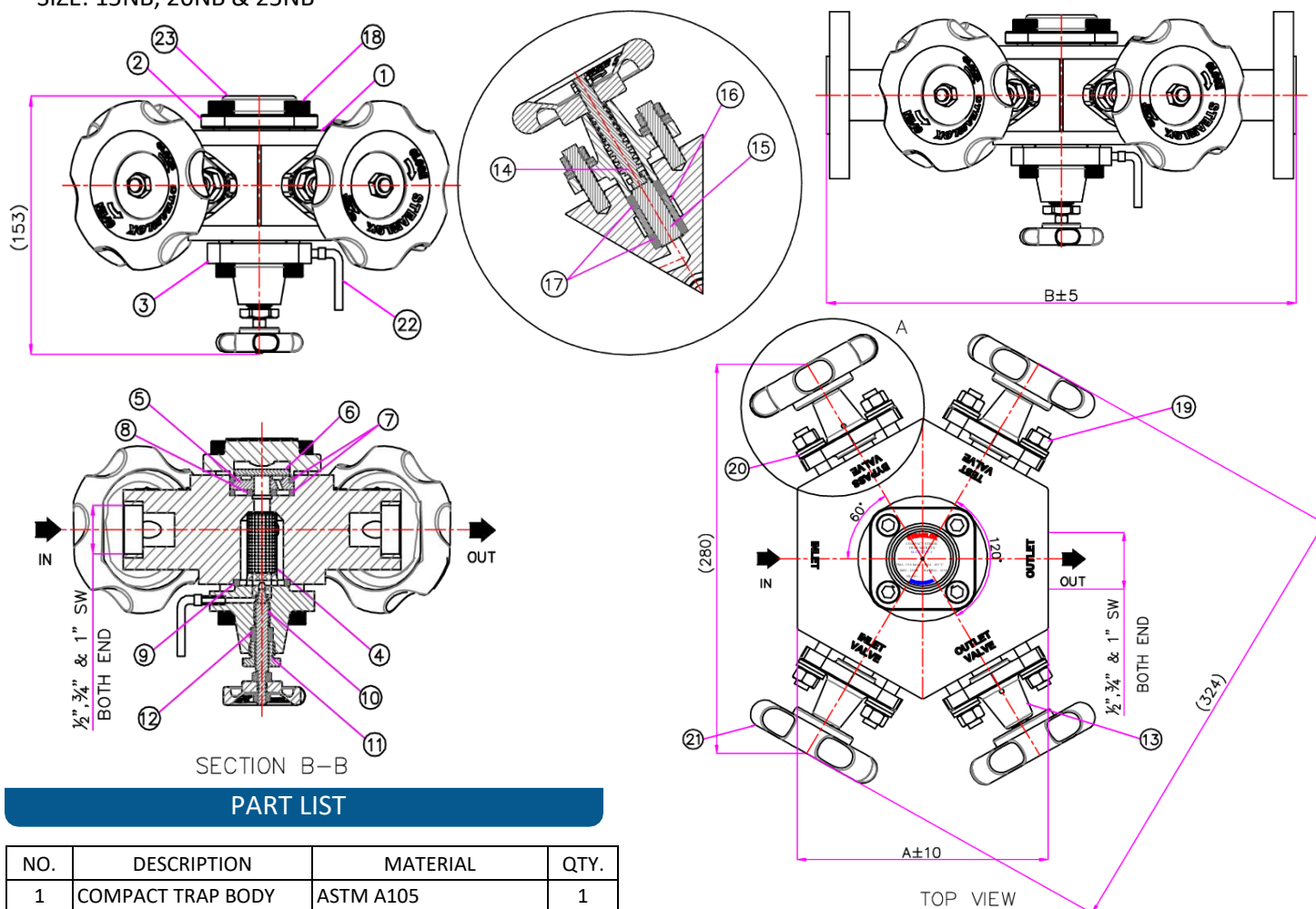
- SLCMTT35-C installed horizontal with the pipeline. Recommended is module installation in a horizontal pipe with disc cover at top.
- Flow direction arrow on the product should be examined carefully. Flow direction considered as left to right.
- Ensure proper flushing of line before installation.
- Condensate discharge should be properly routed to safe passage.
- Recommended that module installation height should be more than 1mtr from ground level for ease of operation.



SL-Cat. No. 115

CONSTRUCTION

SIZE: 15NB, 20NB & 25NB



PART LIST

NO.	DESCRIPTION	MATERIAL	QTY.
1	COMPACT TRAP BODY	ASTM A105	1
2	DISC COVER	ASTM A105	1
3	VENT CAP/BONNET	ASTM A105	1
4	STRAINER SCREEN	AISI 304 (0.8 PERFO.)	1
5	SEAT	AISI 420	1
6	DISC	AISI 420	1
7	SEAT GASKETS OUTER	SPIRAL WOUND GRAPHITE WITH AISI 304	2
8	SEAT GASKETS INNER		1
9	STRAINER CAP GASKETS		1
10	VENT STEAM	AISI 304	1
11	GLAND NUT	AISI 304	1
12	GLAND PACKING	GRAPHITE WITH AISI 304	1
13	BONNET	ASTM A105	4
14	SPINDLE	AISI 420	4
15	PISTON	AISI 304	4
16	LANTERN RING	AISI 420	4
17	SEAL RINGS	GRAPHITE WITH AISI 304	8
18	STUD/ALLEN BOLT	ASTM A193 GR. B7/ SS	--
19	NUT	ASTM A194 GR.2H	--
20	BELLEVILLE WASHER	SPRING STEEL 50CR. V4	--
21	HANDWHEEL	FIBER GLASS	5
22	VENT PIPE	AISI 304	--
23	NAME PLATE	AISI 304	1
24	BYPASS TUBING	AISI 304	--

• Insulation Cover is optional.

DIMENSIONS

SIZE (NB)	SW (A)	ASA 150 (B)	ASA 300 (B)	WT. APX. (KG)
15	150	260	270	12
20	150	260	270	12.5
25	175	310	320	16

• ALL DIMENSIONS ARE IN MM.

SPARE PARTS

- Seat, Disc & Gaskets Assembly (Set P. No. 5,6,7,8,9).
- Strainer Screen (Set of 4).
- Insulation Cover.