

STEAMLOK ENGINEERING

[SLDCV - 77] Disc Check Valve



SLDCV - 77 is Disc check valve in stainless steel (CF8M) construction, suitable for wide range of fluids like Liquid Steam, Gas in process application

SIZE

15 NB, 20 NB, 25NB,
40 NB, 50 NB, 80 NB, 100 NB

PIPE CONNECTIONS

Sandwiched Flanged :
Between two Flanges ASA 150, or ASA 300

UNIQUE FEATURES

- Compact design
- Light weight

INSTALLATION

- Disc check valve must be fitted between flanges as per flow direction indicated on body.
- Have to ensure proper fitment of gaskets between body & flanges.
- Ensure proper flushing of line before installation.
- Not to use on line with heavy pulsating flow.

DESIGN CONDITIONS

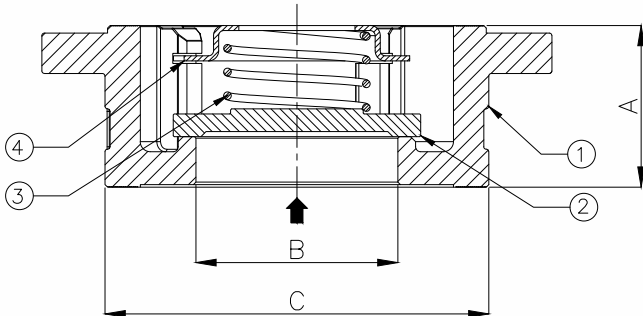
- Suitable for ASA 300
- Max. allowable pressure (PMA) - 49.6 bar (g) 38 °C
- Max. allowable temp (TMA) - 425 °C at 29.1 bar (g)

CERTIFICATION

IBR approval / En10204 - 3.1

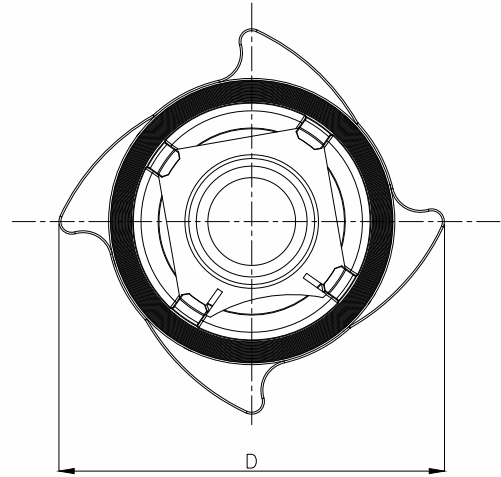
[SLDCV - 77] DISC CHECK VALVE

CONSTRUCTION



DIMENSIONS

Flanged connection



PART LIST

No.	Part Name	Material	Qty.
1	Body	ASTM A 351 Gr. CF 8 M	1
2	Disc	AISI 316	1
3	Spring	AISI 316	1
4	Spring Retainer	AISI 316	1

SLDCV-77	A	B	C	D	Wt.
15 NB	18	15	40	54	0.13 Kg
20 NB	20	20	46	69	0.17 Kg
25 NB	23.5	25	55	85	0.35 Kg
40 NB	32	40	76	101	0.66 Kg
50 NB	42	48	94	115	1.25 Kg
80 NB	50	80	126	155	2.10 Kg
100 NB	61	100	148	184	3.60 Kg

HOW TO ORDER

- Ex. SLDCV77, stainless steel disc check valve, 15NB, IBR

SPARE PARTS

- Disc check valves are non-maintainable, hence no spares are available.



Steamlok Engineering Private Limited

Factory : W75, S-Block, MIDC Bhosari, Pune (MH) 411 026, India

Email : sales@steamlokengineering.com

Web : www.steamlok.com | www.steamlok.co.in