

STEAMLOK ENGINEERING

[SLFT - 25]

Ball Float Steam Trap - 40 NB, 50 NB



Steamlok



SLFT 25 is an uniquely designed Float Trap in Cast Steel (WCB) with dual Sight Glass

SIZE

40 NB, 50 NB

PIPE CONNECTIONS

Screwed : BSP, BSPT, NPT

Socket Weld

Flanged : ASA 150, ASA 300

UNIQUE FEATURES

- Sight glass as standard feature.
- Uniquely Designed with MOC cast steel (WCB)
- Self aligning steam lock release (SLR)
- Functional test - 100% on steam.

CERTIFICATION

IBR approval / En10204 3.1

DESIGN CONDITIONS

- Max. allowable pressure (PMA) - 51 bar (g)
- Max. allowable temperature (TMA) - 425 °C
- Max. operating pressure (PMO) - 32 bar (g)
- Max. operating temperature (TMO) - 410 °C
- Max. differential pressure - ΔP max

SLFT 25 - 4.5 - 4.5 bar(g)

SLFT 25 - 10 - 10 bar(g)

SLFT 25 - 13 - 13 bar (g)

SLFT 25 - 21 - 21 bar (g)

SLFT 25 - 32 - 32 bar (g)

DISCHARGE CAPACITY (Kg/hr)

Model	Size	Differential Pressure (bar)												
		0.5	1	1.5	2	2.5	3	3.5	4	4.5	5	5.5	6	6.5
SLFT 25-4.5	40NB, 50NB	7881	11660	14111	16430	17838	19080	21132	22897	24062	-	-	-	-
SLFT 25-10	40NB, 50NB	4100	5512	6539	7540	8416	9372	10011	11503	11288	12247	13250	14445	14840
SLFT 25-13/21/32	40NB, 50NB	1881	2090	2482	2874	3281	3657	3919	4180	4415	4650	5486	6292	6584

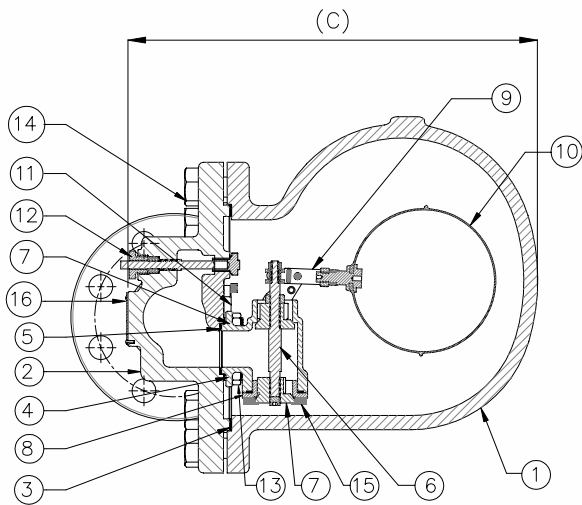
Model	Size	Differential Pressure (bar)												
		7	7.7	8	8.5	9	9.5	10	10.5	11	11.5	12	12.5	13
SLFT 25-4.5	40NB, 50NB	-	-	-	-	-	-	-	-	-	-	-	-	-
SLFT 25-10	40NB, 50NB	15442	15561	15975	16218	16536	16933	17253	-	-	-	-	-	-
SLFT 25-13/21/32	40NB, 50NB	6845	7036	7294	7566	7800	8569	9256	9277	9297	9316	9336	9348	9360



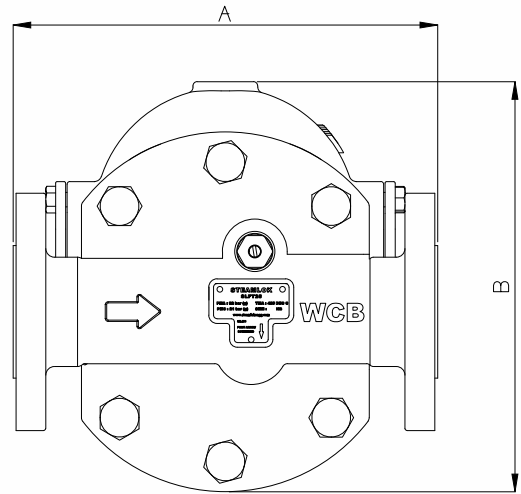
[SLFT - 25]

BALL FLOAT STEAM TRAP - 40 NB, 50 NB

CONSTRUCTION



DIMENSIONS



PART LIST

No.	Part Name	Material	Qty
1	Body	ASTM A216 Gr. WCB	1
2	Cover		1
3	Cover Gasket	Non CAF HT	1
4	Valve Body	ASTM A 743 Gr. Ca40	1
5	Valve body Gasket	Non CAF HT	1
6	Stem	AISI 304	1
7	Seat	ASTM A 743 Gr. Ca40	2
8	Seat Plate	ASTM A 743 Gr. Ca40	1
9	Lever	ASTM A 743 Gr. Ca40	1
10	Float Assembly	AISI 304	1
11	Deflector Plate	AISI 304	1
12	SLR Assembly	AISI 304	1
13	Stud, Valve Body	AISI 304	4
14	Bolt	ASTM A193 Gr. B7	6
15	Allen Bolt	AISI 304	4
16	Name Plate	AISI 304	1

Screwed / Socket weld / Flanged

SLFT - 25	A (mm)	B (mm)	C (mm)	Wt.(Approx)
40 NB 50 NB	295	285	326	30 kg

SPARE PARTS

- Valve Assembly with float (4.5 bar, 10 bar, 13 bar, 21 bar, 32 bar)
- Float Assembly
- Valve Assembly without float assembly (4.5 bar, 10 bar, 13 bar, 21 bar, 32 bar)
- Air Vent assembly
- SLR assembly
- Cover gasket (Set of 3)

INSTALLATION

- Trap must be installed in horizontal direction with arrow direction on nameplate pointing down.
- Inlet direction arrow on pipe end must be fitted at inlet of trap.
- Slow opening of isolation valve is recommended to avoid system shock.
- Ensure proper flushing of line before installation of trap.

HOW TO ORDER

Ex. SLFT - 25, Carbon Steel (WCB), Float Trap, 50 NB, Flange to ASA 300, 10 bar, SLR, IBR



Steamlok Engineering Private Limited

Factory : W75, S-Block, MIDC Bhosari, Pune (MH) 411 026, India

Email : sales@steamlokengineering.com

Web : www.steamlok.com | www.steamlok.co.in