

STEAMLOK ENGINEERING

[**SLFT - 75**]

World's 1st

ZERO LEAK BALL FLOAT STEAM TRAP

15 NB, 20NB, 25NB



Steamlok



SLFT-75 is an uniquely designed ball float steam trap in SG Iron construction with maintainable strainer, sight glass, unique valve seat & rotating ball design.

A ball float steam trap is a product used on steam process line to remove condensate formed during process. Condensate is nothing but hot water formed during heating process when steam loses its heat energy.

It is must to remove condensate as and when it form to maintain process temperature. Function of a ball float steam trap is to trap (hold) steam & allow condensate to go out from trap. Steamlok's SLFT75 is an uniquely designed ball float trap with many novel features which helps to save energy & protect environment, gives better savings to customer in terms of product cost, space & long term maintenance cost with multiple functions in one products.

Novel Features :

1. Inbuilt maintainable strainer for online cleaning of strainer
2. Online Flushing Arrangement
3. Sight glass as standard feature to monitor trap operation (Visual control)
4. Rotary ball design for self seating arrangement of ball & seat with zero leakage
5. Replaceable seat plate design with reduced components, making trap robust & long lastig
6. Self aligning SLR (Steam lock release) design for taking care of cover & seat plate misalignment (Avoiding steam loss)
7. SG Iron (ductile) construction for better strength & life of trap

Patent Reg. No. 201921034975 Float Trap seat plate with rotary ball float mechanism



SIZE :

15 NB, 20 NB, 25NB

PIPE CONNECTIONS

Screwed : BSP, BSPT, NPT

UNIQUE FEATURES

- Maintainable strainer design
- Sight glass as standard features
- Unique valve & seat design with rotating ball
- Self aligning SLR design
- Functional test - 100 % on steam

CERTIFICATION

En 10204 - 3.1

DESIGN CONDITIONS

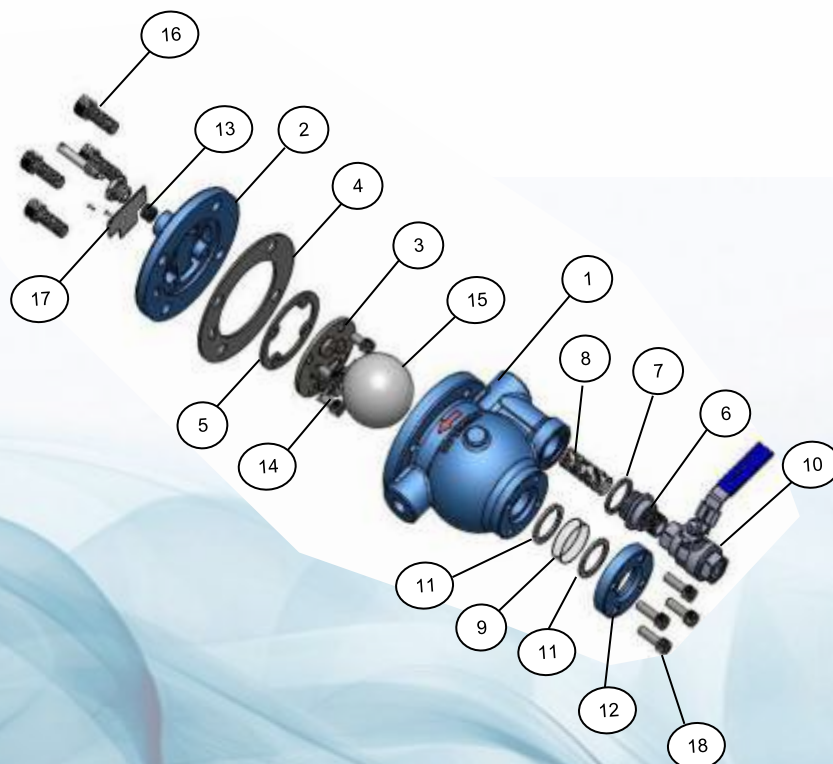
- Max. Allowable Pressure (PMA) - 16 Bar (g) @ 100°C
- Max. Allowable Temperature (TMA) - 220°C
- Max. Operating Pressure (PMO) - 14 Bar
- Max. Operating Temperature (TMO) - 220°C
- Max. differential pressure - ΔP_{max}
SLFT 75 - 5 - 5 bar (g)
SLFT 75 - 10 - 10 bar (g)
SLFT 75 - 14 - 14 bar (g)

DISCHARGE CAPACITY (Kg/hr)

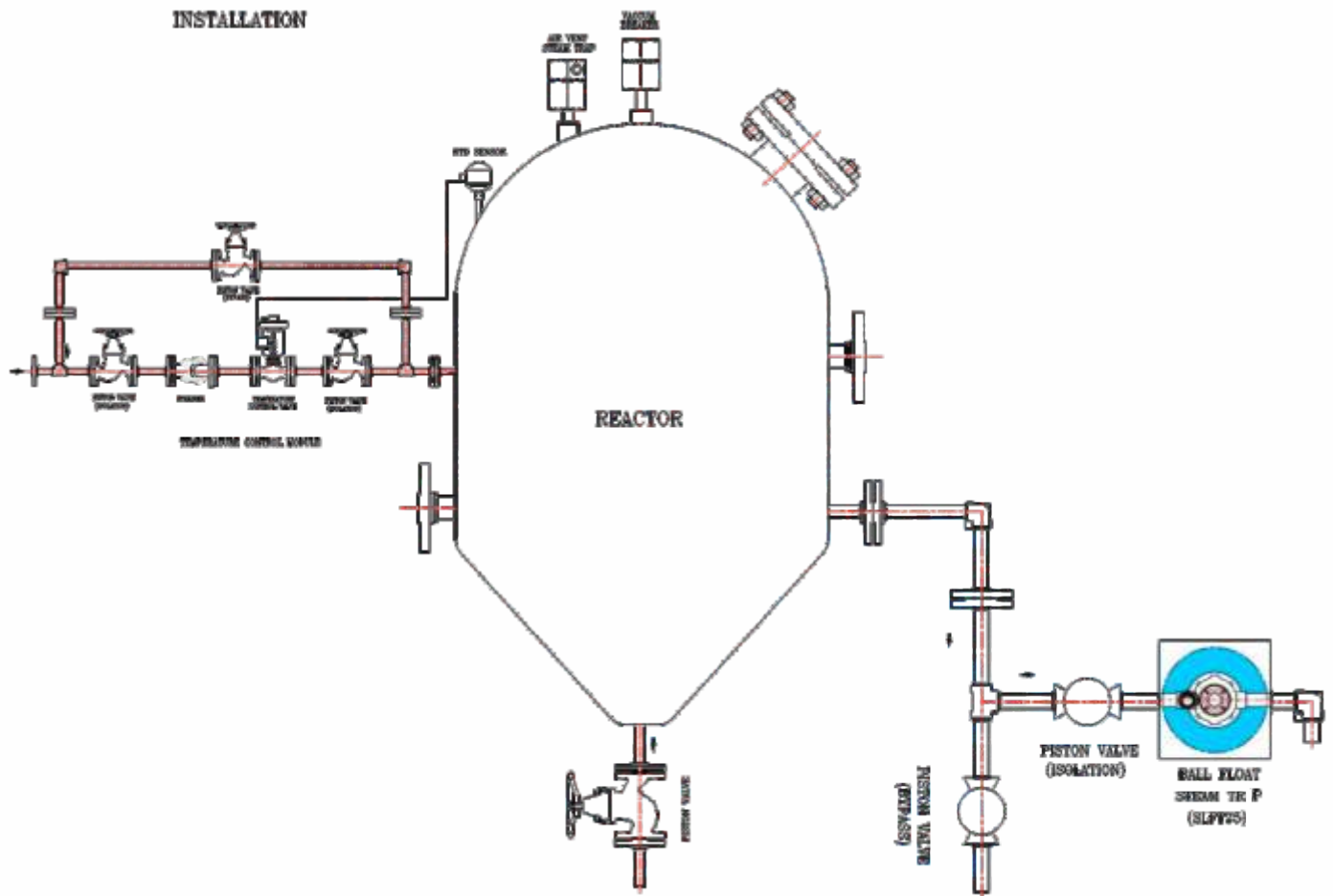
MODEL	SIZE	DIFFERENTIAL PRESSURE(BAR)													
		0.5	1	1.5	2	2.5	3	3.5	4	4.5	5	5.5	6	6.5	7
SLFT75-5	15NB,20NB	240	336	418	487	546	600	647	696	740	781	-	-	-	-
SLFT75-10	15NB,20NB	130	182	227	264	296	325	351	378	401	424	445	466	486	505
SLFT75-14	15NB,20NB	54	75	94	109	122	134	145	156	166	175	184	192	200	208
SLFT75-5	25NB	598	837	1042	1213	1360	1495	1612	1735	1842	1947	-	-	-	-
SLFT75-10	25NB	266	372	463	539	605	664	716	770	819	865	909	952	992	1031
SLFT75-14	25NB	130	182	227	264	296	325	351	378	401	424	446	466	486	505

MODEL	SIZE	DIFFERENTIAL PRESSURE(BAR)													
		7.5	8	8.5	9	9.5	10	10.5	11	11.5	12	12.5	13	13.5	14
SLFT75-5	15NB,20NB	-	-	-	-	-	-	-	-	-	-	-	-	-	-
SLFT75-10	15NB,20NB	524	541	560	576	592	609	-	-	-	-	-	-	-	-
SLFT75-14	15NB,20NB	216	224	231	238	245	251	258	265	271	278	284	290	297	302
SLFT75-5	25NB	-	-	-	-	-	-	-	-	-	-	-	-	-	-
SLFT75-10	25NB	1069	1105	1141	1176	1209	1243	-	-	-	-	-	-	-	-
SLFT75-14	25NB	524	542	560	576	593	609	625	641	657	673	688	703	718	733

EXPLODED VIEW



INSTALLATION



INSTALLATION GUIDELINES

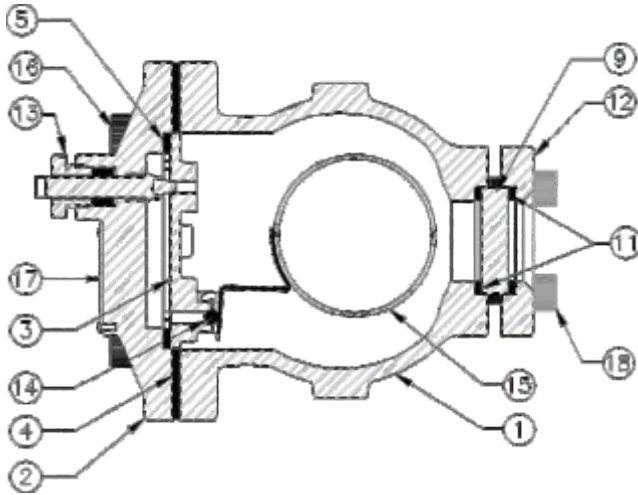
- Trap must be installed in horizontal direction with arrow direction on nameplate pointing down. Inlet direction arrow in pipe end must be fitted at inlet of trap.
- Slow opening of isolation valve is recommended to avoid system shock.
- Ensure proper flushing of line before installation of trap.
- Periodic flushing through below down valve is recommended for smooth operation of trap.
- Blow down valve should be open at startup to avoid water hammering effect if the system was off for longer period of time.

[SLFT - 75]

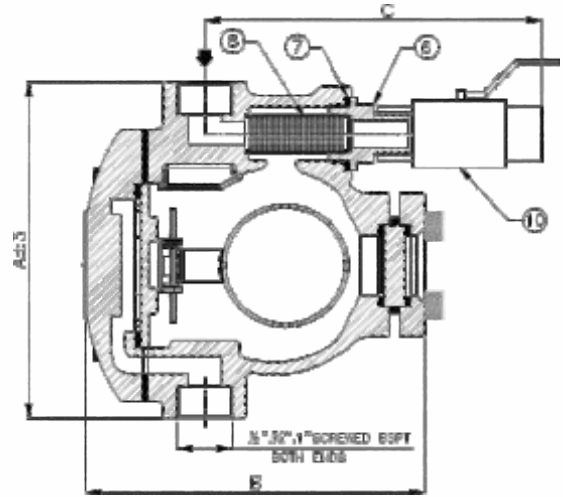
ZERO LEAK BALL FLOAT STEAM TRAP

15 NB, 20NB, 25NB

CONSTRUCTION



DIMENSIONS



PART LIST

NO	DESCRIPTION	MATERIAL	QTY
1	BODY	IS 1865 SG 500/7	1
2	COVER		1
3	COVER MOUNTING PLATE	ASTM A351 GR.CF8	1
4	COVER GASKET	GRAPHITE WITH AISI 304	1
5	COVER MOUNTING PLATE GASKET	GRAPHITE WITH AISI 304	1
6	BLOW DOWN CONNECTOR	ASTM A216 GR.WCB	1
7	STRAINER CAP GASKET	GRAPHITE WITH AISI 304	1
8	STRAINER SCREEN	AISI 304 (0.8 PERF)	1
9	SIGHT GLASS	TOUGHENED BOROSILICATE GLASS	1
10	BALL VALVE	ASTM A351 GR.CF8	1
11	SIGHT GLASS GASKET	GRAPHITE WITH AISI 304	2
12	SIGHT GLASS COVER	ASTM A516 GR.70	1
13	SLR UNIT	AISI 304	1
14	BALL	AISI 440C	1
15	FLOAT ASSEMBLY	AISI 304	1
16	ALLEN BOLT	ASTM A193 GR.B7	4
17	NAME PLATE	AISI 304	1
18	SIGHT GLASS COVER BOLT	ASTM A193 GR.B7	4

Screwed

MODEL	SIZE	A	B	C	WT.(APPROX.)
SLFT-75	15,20NB	165	161	144	5.8 KG
	25NB	175	176	148	6.5 KG

SPARE PARTS

- Float Assembly (5 bar, 10 bar, 14 bar)
- Strainer screen (set of 5)
- Cover gasket (set of 5)
- Air Vent assembly / SLR Unit

CERTIFICATION

- En 10204-3.1

HOW TO ORDER

Ex. SLFT-75, Ball Float Steam Trap in SG Iron, 15NB, Screwed BSPT, 5 bar (g), SLR, Non IBR.



Steamlok Engineering Private Limited

Factory : W75, S-Block, MIDC Bhosari, Pune (MH) 411 026, India

Email : sales@steamlokengineering.com

Web : www.steamlok.com | www.steamlok.co.in