

STEAMLOK ENGINEERING

[SLFT - 75]

Ball Float Steam Trap - 40 NB, 50 NB



Steamlok



SLFT-75 is an uniquely designed ball float steam trap in SG Iron construction, Trap consists of an unique rotating ball and seat design with inbuilt sight glass.

SIZE

40 NB, 50 NB

PIPE CONNECTIONS

Screwed : BSP, BSPT, NPT

DESIGN CONDITIONS

- Max. Allowable Pressure(PMA) - 16 Bar(g)@100 °C
- Max. Allowable Temp (TMA) 220 °C
- Max. Operating Pressure (PMO) - 14 Bar(g)
- Max. Operating Temp. (TMO) - 220 °C
- Max. differential Pressure - Δ Pmax
 SLFT 75 - 5 - 5 bar(g)
 SLFT 75 - 10 - 10 bar(g)
 SLFT 75 - 14 - 14 bar(g)

CERTIFICATION

En 10204 - 3.1

INSTALLATION

- Trap must be installed in horizontal direction with arrow direction on nameplate pointing down
- Inlet direction arrow in pipe end must be fitted at inlet of trap.
- Ensure proper flushing of line before installation of trap.
- Slow opening of isolation valve is recommended to avoid system shock.

UNIQUE FEATURES

- Unique rotating ball design Makes trap "Zero leak"
- Self aligning steamlok release (SLR)
- Sight Glass as standard feature
- Functional test - 100% on steam

DISCHARGE CAPACITY (Kg/hr)

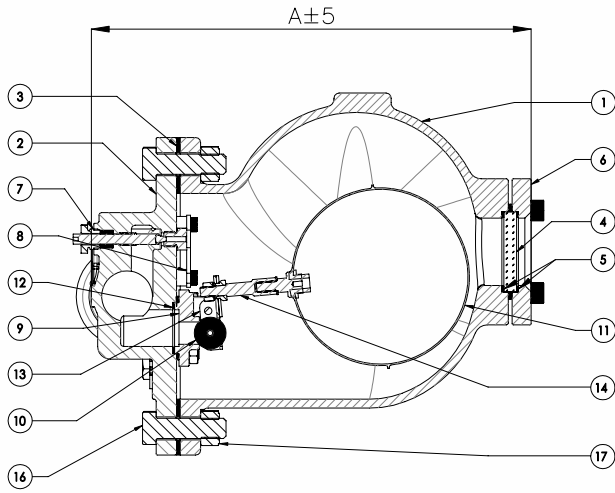
MODEL	SIZE	DIFFERENTIAL PRESSURE (bar)													
		0.5	1	1.5	2	2.5	3	3.5	4	4.5	5	5.5	6	6.5	7
SLFT75-5	40NB, 50NB	4252	5949	7409	8617	9669	10627	11461	12324	13102	13847	--	--	--	--
SLFT75-10	40NB, 50NB	2010	2812	3502	4073	4570	5023	5417	5825	6193	6545	6873	7197	7502	7797
SLFT75-14	40NB, 50NB	1499	2097	2612	3038	3409	3746	4040	4345	4619	4882	5126	5368	5595	5816

MODEL	SIZE	DIFFERENTIAL PRESSURE (bar)													
		7.5	8	8.5	9	9.5	10	10.5	11	11.5	12	12.5	13	13.5	14
SLFT75-5	40NB, 50NB	--	--	--	--	--	--	--	--	--	--	--	--	--	--
SLFT75-10	40NB, 50NB	8088	8366	8637	8897	9167	9426	--	--	--	--	--	--	--	--
SLFT75-14	40NB, 50NB	6032	6240	6442	6636	6837	7030	7220	7390	7572	7732	7918	8103	8295	8446



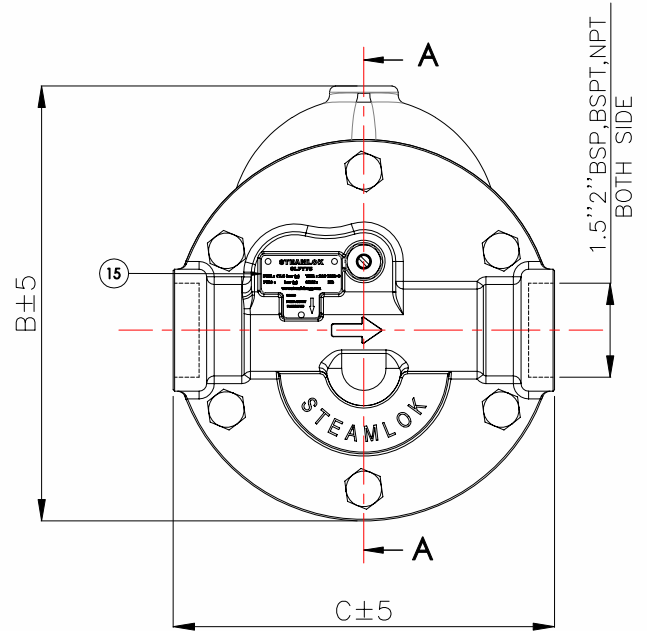
[SLFT - 75] Ball Float Steam Trap - 40 NB, 50 NB

CONSTRUCTION



SECTION A-A

DIMENSIONS



PART LIST

NO	DESCRIPTION	MATERIAL	QTY
1	BODY	IS 1865 SG 500/7	1
2	COVER		1
3	COVER GASKET	NON CAF GRADE AF 154	1
4	SIGHT GLASS	TOUGHENED BOROSILICATE GLASS	1
5	SIGHT GLASS GASKET	GRAPHITE WITH AISI 304	2
6	SIGHT GLASS COVER	ASTM A216 GR. WCB	1
7	SLR ASSEMBLY	AISI 304	1
8	DEFLECTOR PLATE	AISI 304	1
9	SEAT	ASTM A351 GR. CF8	1
10	BALL	AISI 440C	1
11	FLOAT ASSEMBLY	AISI 304	1
12	SEAT GASKET	GRAPHITE WITH AISI 304	1
13	LEVER	AISI 304	1
14	FLOAT ARM	AISI 304	1
15	NAME PLATE	AISI 304	1
16	BOLT	HIGH TENSILE Gr.10.9	1
17	NUT	HIGH TENSILE Gr.10	1

Screwed

SLFT - 75	A(mm)	B(mm)	C(mm)	Wt.(Approx)
40 NB	355	285	250	26 kg
50NB				

SPARE PARTS

- Float Assembly
- Sight Glass with gasket (Set of 2)
- Cover gasket (set of 2)
- SLR seal Assembly (Set of 5)

HOW TO ORDER

Ex. SLFT-75, Ball Float Steam Trap in SG Iron, 40NB, Screwed BSPT, 5 bar (g), SLR Non IBR.



Steamlok Engineering Private Limited

Factory : W75, S-Block, MIDC Bhosari, Pune (MH) 411 026, India

Email : sales@steamlokengineering.com

Web : www.steamlok.com | www.steamlok.co.in